

Day month year

RAIN EROSION TEST



Test report for Rain Erosion testing according to ASTM 73-10

Reference no: SAPXXXXX

Customer name: Company name

Customer contact: First and last name



TESTED ACCORDING TO
ASTM 673-10

CONTACT INFORMATION

Customer: Customer name
Contact: Contact person
Date: XX-XX-XXXX



SUBJECT INFORMATION

Test reference no: SAPxxxxx
Operator: SK / TK
Specimen: **Name of specimen**

Start weight [g]: x
End weight [g]: x
Alignment [g]: x
Vroot [m/s]: x
Vcenter [m/s]: x
Vtip [m/s]: x
Blade no: x

Shape and size of specimen cf. S12-Test-007

TEST SPECIFICATIONS

Duration [hour : min]: Hour : min
Image interval [hour : min]: Hour : min
Radius of specimens attachment: 915 mm
Rain [mm/h]: 30-35
Droplet size [mm]: 1-2
Temperature [°c]: 20-25
Form of impinging liquid: Drops
Angle of incidence: 90°
Exposed area of specimen: Leading edge

Reference material used: **Aluminium**

Heat treatment of reference material: **30 hours at 300 °C**

Hardness of reference material: x

BEFORE START OF TEST

Specimen: Name of specimen

Duration [hour : min]: 00 : 00



TEST RESULTS

Specimen: Name of specimen

Duration [hour : min]:

Hour : min

Erosion occurs primarily at:

Tip end:

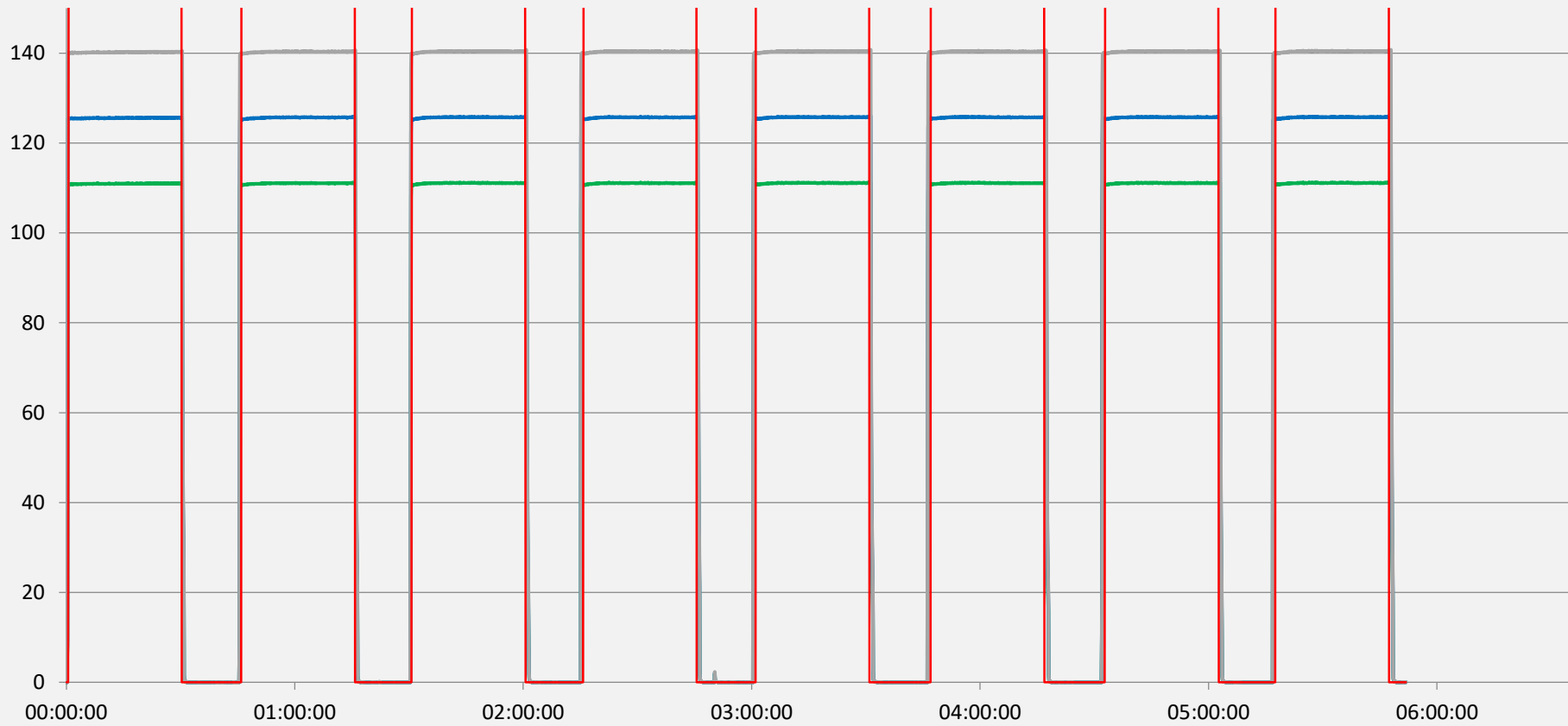
Middle part:

Root end:



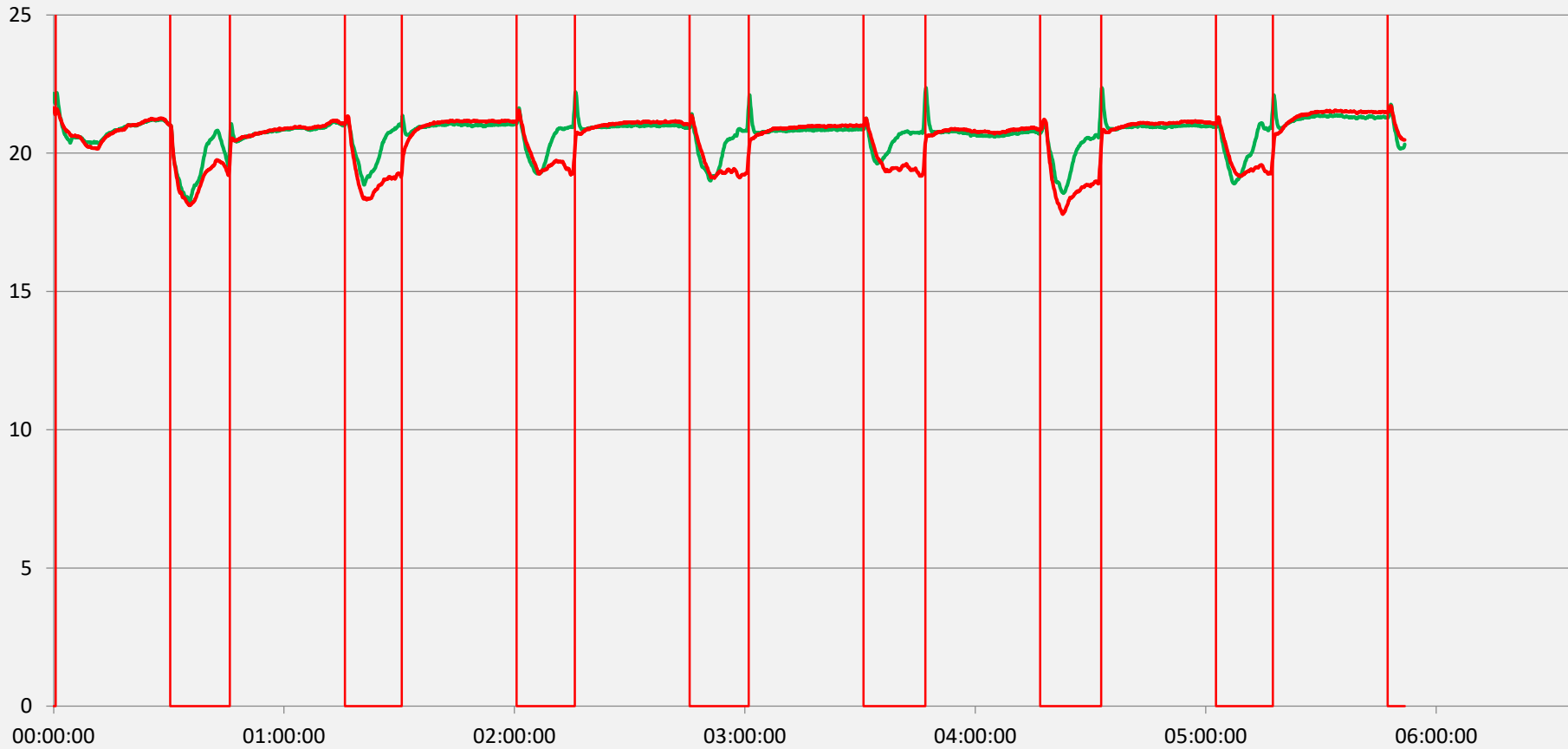
VELOCITY

Gray: - - - - - Test specimen tip speed
Blue: - - - - - Test specimen center speed
Green: - - - - - Test specimen root end speed



TEMPERATURE

Green: ----- Temp 1 at test chamber top
Red: ----- Temp 2 at test chamber bottom



EVALUATION OF EROSION ON SPECIMEN



Spots of erosion between $0-75 \text{ mm} \pm 5 \text{ mm}$ will resolve in a mark in erosion primarily occurs at **tip end**.

Spots of erosion between $75-150 \text{ mm} \pm 5 \text{ mm}$ will resolve in a mark in erosion primarily occurs at **middle part**.

Spots of erosion between $150-225 \text{ mm} \pm 5 \text{ mm}$ will resolve in a mark in erosion primarily occurs at **root end**.



polytech

Beyond the idea

PolyTech A/S
Test Center
Snedkervej 20
6740 Bramming
Denmark

Tel.: +45 7510 1026
Fax: +45 7510 1126
info@poly-tech.dk
www.poly-tech.dk

End of report